

ROUND FLOOR BOX SYSTEMS

**ROUND FLOOR BOX COVERS
AND RINGS**

RESIDENTIAL FLOOR BOXES

**RECTANGULAR FLOOR
BOX SYSTEMS**

**RECTANGULAR FLOOR
BOX COVERS**

**TECHNICAL DATA -
FLOOR BOXES & COVERS**

FEATURES:

- **NONCONDUCTIVE**
- **DURABLE**
- **CORROSION RESISTANT**
- **CAN BE USED FOR BOTH
POWER AND DATACOM IN
SAME INSTALLATION**
- **RECTANGULAR FLOOR BOX
IS GANGABLE**
- **LISTED UL AND CUL FOR
CONCRETE ENCASEMENT
AND WOOD/METAL FRAME
CONSTRUCTION**

Today's commercial office/retail environment is placing increasing demands on telephone, data and power requirements. These dynamics demand construction decisions to meet existing needs, yet accommodate future changes. In addition, containing construction costs and providing fit-up flexibility remain important in the building design process.

The design, installation and application of floor boxes in today's office and retail sites no longer need to be limited by past product designs.

1. LHP reserves the right to round orders to the nearest package quantity.
2. Prices subject to change without notice.
3. Shaded items indicate non-stock factory make-to-order items only – material is non-returnable and non-cancellable.

Floor Box Base



Part #	Color	UPC Code	Carton Quantity	Carton Dimensions (L x W x H)	Case Weight (Lbs)	Case Cube (Cu. Ft.)
E971FB-CAR	Grey	0 34481 06706 1	3	14" x 14" x 14.75"	15.55	1.67

Brass Floor Box Covers



Part #	Color	UPC Code	Carton Quantity	Carton Dimensions (L x W x H)	Case Weight (Lbs)	Case Cube (Cu. Ft.)
E97BRG	Brass	0 34481 14978 1	5	6" x 6" x 6"	7.49	0.12
E97BRR	Brass	0 34481 18495 9	3	8.12" x 7.75" x 9.25"	5.88	0.03

E97BRG; Brass Cover for Single or 1-1/4" NPS Opening

E97BRR; Brass Cover Kit with Adapter Ring (E97ABR2)

Nonmetallic Designer Series Duplex Receptacle Flush Mount Cover



Part #	Color	UPC Code	Carton Quantity	Carton Dimensions (L x W x H)	Case Weight (Lbs)	Case Cube (Cu. Ft.)
E97DSB	Brown	0 34481 11202 0	10	18" x 6.75" x 6.5"	3.75	0.46
E97DSC	Carmel	0 34481 11201 3	10	18" x 6.75" x 6.5"	3.75	0.46
E97DSI	Ivory	0 34481 11198 6	10	18" x 6.75" x 6.5"	5.20	0.46
E97DSS	Slate	0 34481 11188 8	10	18" x 6.75" x 6.5"	5.70	0.46
E97DST	Taupe	0 34481 11199 3	10	18" x 6.75" x 6.5"	4.40	0.46

Nonmetallic Covers with 1-1/4" NPS Opening



Part #	Color	UPC Code	Carton Quantity	Carton Dimensions (L x W x H)	Case Weight (Lbs)	Case Cube (Cu. Ft.)
E97SSRS	Slate	0 34481 15016 9	10	18" x 6.75" x 6.5"	3.8	0.45
E97SSRB	Brown	0 34481 15019 0	10	18" x 6.75" x 6.5"	3.8	0.45
E97SSRC	Carmel	0 34481 15017 6	10	18" x 6.75" x 6.5"	3.8	0.45

Clear Cover Carpet Ring



Part #	Color	UPC Code	Carton Quantity	Carton Dimensions (L x W x H)	Case Weight (Lbs)	Case Cube (Cu. Ft.)
E97CCR	Clear	0 34481 20471 8	10	11.5" x 7.6" x 5.3"	1.1	0.27

Accepts 3-7/8" dia. plates.

Metal Cover Adapter



Part #	Color	UPC Code	Carton Quantity	Carton Dimensions (L x W x H)	Case Weight (Lbs)	Case Cube (Cu. Ft.)
E97ABR2	Grey	0 34481 14962 0	10	12" x 6" x 6"	3.3	0.25

Improved one piece nonmetallic metal cover adapter provides precision fit for Carlton round brass floor box covers.

Multi-Service Divider Kit



Part #	Product Size	UPC Code	Carton Quantity	Carton Dimensions (L x W x H)	Case Weight (Lbs)	Case Cube (Cu. Ft.)
E973K	N/A	0 34481 04295 2	10	11.5" x 7.6" x 11.2"	3.0	0.57

This adapter kit for Carlton E971FB round floor box allows for 2 or 3 partitioned areas within the box totally segregating the power, data, and communications wiring from one another. For use with nonmetallic covers only.

3/4" Y Fitting



Part #	Product Size	UPC Code	Carton Quantity	Carton Dimensions (L x W x H)	Case Weight (Lbs)	Case Cube (Cu. Ft.)
E972Y	3/4"	0 34481 04294 5	10	7.6" x 6.2" x 4.9"	2.1	0.13

This adapter kit for Carlton E971FB round floor box allows for 2 or 3 partitioned areas within the box totally segregating the power, data, and communications wiring from one another. For use with nonmetallic covers only.

Drop-in Floor Box with Brass Cover



Part #	Color	UPC Code	Carton Quantity	Carton Dimensions (L x W x H)	Case Weight (Lbs)	Case Cube (Cu. Ft.)
E971FBDI	Brass	0 34481 18660 1	5	3.5" x 8" x 9"	7.18	0.14

Lamson Home Products reserves the right to round orders to the nearest package quantity.

Adjustable Floor Box

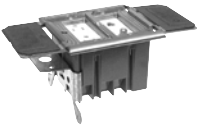
Adjustable Residential Floor Box - Single Gang - 20 cu. in.



Part #	Color	UPC Code	Carton Quantity	Carton Dimensions (L x W x H)	Case Weight (Lbs)	Case Cube (Cu. Ft.)
B121BFBRR	Ivory	0 34481 14914 9	4	12.87" x 6.73" x 8.25"	3.86	0.39
B121BFBB	Brass	0 34481 17854 5	8	10.37" x 8.37" x 11.25"	15.00	0.56

Adjusts to most finished floor heights, from 0" to 1-3/4". Complete assembly includes box, duplex receptacle, cover, molded-in cable clamps, mounting bracket and mounting hardware.

Adjustable Residential Floor Box - Two Gang - 34 cu. in.



Part #	Color	UPC Code	Carton Quantity	Carton Dimensions (L x W x H)	Case Weight (Lbs)	Case Cube (Cu. Ft.)
B234BFBB	Brass	0 34481 19064 6	4	13.62" x 8.5" x 8.25"	9.26	0.55

Adjust to most finished floor heights, from 0" to 1-3/4". Complete assembly includes box, divider, cover, mounting brackets, and mounting hardware.

Rectangular Floor Box



Part #	Product Size	UPC Code	Carton Quantity	Carton Dimensions (L x W x H)	Case Weight (Lbs)	Case Cube (Cu. Ft.)
E976RFB	N/A	0 34481 12656 0	3	75" x 7.5" x 8.7"	7.0	2.83

Modular rectangular floor box can be ganged to form 2 or 3 gang boxes. Remove appropriate side and slide the boxes together. Interlocking tabs keep boxes tight and secure. Reducer plugs are included with floor box and are sold separately when needed.

Reducer Plugs



Part #	Product Size	UPC Code	Carton Quantity	Carton Dimensions (L x W x H)	Case Weight (Lbs)	Case Cube (Cu. Ft.)
E971C	3/4" x 1/2"	0 34481 06235 6	100	11.5" x 7.6" x 5.3"	2.1	0.27
E971D	1" x 3/4"	0 34481 06236 3	100	11.5" x 7.6" x 5.3"	3.2	0.27

Carlon® deep box allows for various thicknesses of concrete pours. Trim out is easy – just use a handsaw to cut off box at desired height to accommodate carpet, tile, or other flooring. Carlon leveling ring guarantees a level top every time, even if the box is tipped slightly during the pouring process.

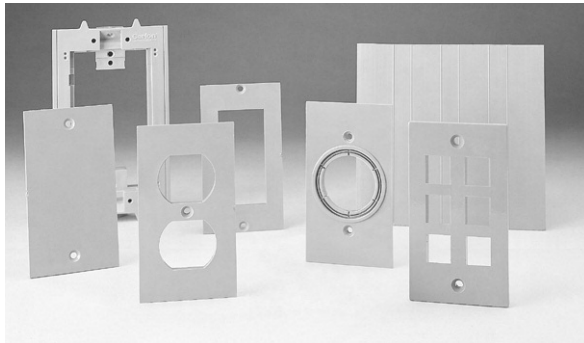
Reducer plugs are included and are sold separately when needed.

Rectangular Floor Box Activation Kit

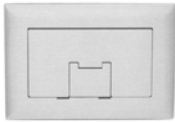
Part #	Product Size	UPC Code	Carton Quantity	Carton Dimensions (L x W x H)	Case Weight (Lbs)	Case Cube (Cu. Ft.)
E976AK2	N/A	0 34481 15027 5	3	9.12" x 7.37" x 7.25"	1.3	0.28

Activation Kit includes:

- Device yoke - for mounting power or low voltage devices.
- Divider - to separate services when floor boxes are ganged together.
- Device Plates - 4 styles are offered to match your device type.
- 6-port low-voltage plate accepts "Keystone" style jacks.



Brass Rectangular Floor Box Cover



Part #	Product Size	UPC Code	Carton Quantity	Carton Dimensions (L x W x H)	Case Weight (Lbs)	Case Cube (Cu. Ft.)
E9761BR	Single Gang	0 34481 15031 2	3	8" x 4.25" x 6.25"	6.8	0.12
E9762BR	Double Gang	0 34481 15030 5	3	9.12" x 4.25" x 8.25"	9.9	0.18
E9763BR	Triple Gang	0 34481 15029 9	3	16" x 12" x 12"	12.1	1.33

Nonmetallic Cover/Carpet Flange

Part #	Product Size	UPC Code	Carton Quantity	Carton Dimensions (L x W x H)	Case Weight (Lbs)	Case Cube (Cu. Ft.)
E9761B	Single Gang	0 34481 12664 5	3	9.12" x 7.37" x 7.25"	1.7	0.28
E9762B	Double Gang	0 34481 12666 9	9	16" x 12" x 12.12"	8.5	1.35
E9763B	Triple Gang	0 34481 12668 3	6	16" x 12" x 12.12"	7.5	1.35

Thermoplastic combination cover/carpet flange is available in 3 colors (brown, caramel and slate). Double door provides easy access to the device and also allows low profile cord exit.



Technical Data: Floor Boxes

	E976RFB (Rectangular)	E971FB (Round)
Material:	PVC	PVC
Box Internal Volume:	97.4 cu. in. 16.8 cu. in. per inch of depth	90 cu. in. 15.5 cu. in. per inch of depth
Minimum Concrete Depth Required:	3 1/2"	3 1/2"
Hubs:	(2) 1"	(2) 1" and (2) 3/4"
Reducer Plugs:	(2) 1 x 3/4" and (2) 3/4" x 1/2"	(2) 1 x 3/4" and (2) 3/4" x 1/2"

Technical Data: Covers

	Rectangular Covers E9761B, E9762B, E9763B, E9761C, E9762C, E9763C, E9761S, E9762S, E9763S	Brass Rectangular Covers E9761BR, E9762BR, E9763BR	Round Covers E97DSB, E97DSI, E97DSC, E97DST, E97DSS, E97SSRB, E97SSRC, E97SSRS	Brass Round Covers E97BR, E97BRG
Material:	Thermoplastic	Brass	Thermoplastic	Brass
Capacity:	Accepts standard NEMA duplex, GFCI face/stylized, or NEMA locking receptacles and data. Accepts standard box mounted data/communication devices with 3.28" hole centers.	Accepts single, duplex, data or GFCI receptacles in one kit, E976AK2	Accepts standard NEMA duplex or 1-1/4" NPS service outlet/single receptacles. Drill points of 3/8" diameter are provided for low voltage cable connections when used with E973K divider kit on nonmetallic versions.	Accepts single or 1-1/4" NPS (E97BRG), or accepts duplex or GFCI receptacles (E97BR).